



# Swema 03

## Instructions

vers 1.01 MB20130530



SWEMA AB  
Pepparv. 27  
SE-123 56 FARSTA  
Tel: +46 8 94 00 90  
Fax: +46 8 93 44 93  
E-mail: [swema@swema.com](mailto:swema@swema.com)  
Web page: [www.swema.com](http://www.swema.com)

### Contents:

1. Introduction.....	1
2. Technical data.....	1
3. Install driver.....	2
4. SwemaTerminal 3.....	2
5. Terminal Window.....	4
6. Calibration and Adjustment..	5
7. Advanced Settings.....	5
8. RS 485 Modbus protocol.....	6
9. Firmware Update.....	7
10. Accessories.....	7

# 1. Introduction

Swema 03 is an omnidirectional anemometer for low air velocity (0,05... 3m/s) and air temperature (Swema 03+, Part no: 767361, measures also barometric pressure). It has a high frequency digital output (Max 100Hz) and connects directly to PC with USB cable (Part no: 767300). Swema 03 is powered by the USB.

When transporting and not using Swema 03 the very sensitive sensor should be protected by the protection cage. When it's time to start measuring with Swema 03 gently loosen the small screw at the bottom of the protection cage and it will slide down and by that exposing the sensor to free air. Lock the cage position with the screw and Swema 03 is ready for measurement.

To measure with one probe at a time and also to change settings for the probe, download the free software SwemaTerminal 3 from our website [www.swema.com](http://www.swema.com) and connect the probe with the USB cable (part nr. 767300).

Swema 03 can be set up with multiple probes with the PC-software SwemaMultipoint (Part nr: 763710) or any other software connecting with USB.

## 2. Technical data

Velocity: 0,05 - 3,00 m/s at 15 - 30 °C

Temperature: 10 - 40°C

Barometric pressure (Only Swema 03+): 600... 1200 hPa

T90 air velocity (90%): 0,2s

Sampling frequency: Max 100 Hz for one probe connected to PC.

Communication: USB & RS-485 MODBUS

### Uncertainty:

Velocity:

At 23°C:  $\pm 0,03$  m/s at 0,05...1,0 m/s,  $\pm 3\%$  read value at 1...3 m/s

At 15...30°C:  $\pm 0,04$  m/s at 0,05...1 m/s,  $\pm 5\%$  read value at 1...3 m/s

Temperature:

At 23°C:  $\pm 0,3$ °C

At 10...40°C:  $\pm 0,5$ °C

Barometric pressure (Only Swema 03+):

$\pm 3,5$ hPa

95% coverage probability in non condensing, non moist air,  
<80%RH, non aggressive gases

### 3. Driver installation

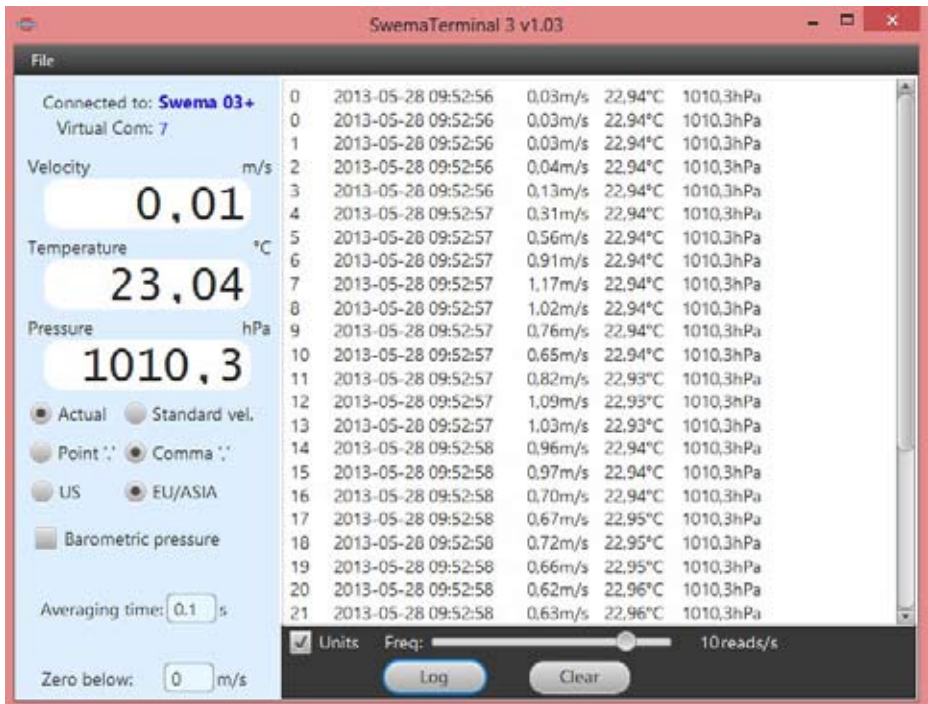
To be able to use Swema 03 with a PC or to change settings a driver for the probe needs to be installed. The drivers are automatically installed after installation of the of the fre software "SwemaTerminal 3".

1. Download "SwemaTerminal 3" (is a zip-file) from [www.swema.com](http://www.swema.com).

2. Unzip the file and run the setup file. When the setup is done connect the USB cable (Part no: 767300) between the probe and PC. The PC will now install the necessary drivers automatically.

In case the driver installation dosen't succeed you can also do it manually. Open the device manager, right click on "unknown device" and then "update driver". The drivers can be found at "C:/Program Files/Swema" (make sure that the box "include sub folders" is checked).

### 4. SwemaTerminal 3



With SwemaTerminal 3 it's possible to measure with a single probe. You can also do online logging and store the logged data on your PC, update firmware, print calibration protocol and change settings. Information of what kind of probe and at which COM-port it's connected can be found on the top left side.

**"Velocity", "Temperature" & "Pressure":**

Swema 03 shows here the measured values of air velocity and temperature and also what the barometric value is set to (Swema 03+ shows the barometric pressure it measuring).

**"Actual" or "Standard velocity":**

If set to "Actual" the velocity shows as it is at present temperature and barometric pressure. If set to "Standard" the velocity is presented as it is at standard conditions (1013hPa & 20°C).

**"Point" or "Comma":**

Set point or comma as decimal separator.

**"US" or "EU/ASIA":**

Set unit system to US (fpm, °F, inHg) or EU/ASIA (m/s, °C, hPa).

**Barometric Pressure:**

Set the barometric pressure. Swema 03 will use the barometric pressure set here to compensate for the air density. If it's a Swema 03+ it's possible to set a barometric pressure manually instead of using the in-built barometer.

**Averaging time:**

Swema 03 has an internally sampling frequency of 100 Hz (100 measurement/s). With "Averaging time" it's possible to set a floating averaging that is calculated of the internal sampled values. The read out values from Swema 03:s digital output will be an average of the internal sampling. A higher "Averaging time" will use more internal samples for the averaging and by that give a more stable read out from the probe. Swema 03 will independent of set "Averaging time" always use an internally sampling frequency of 100Hz.

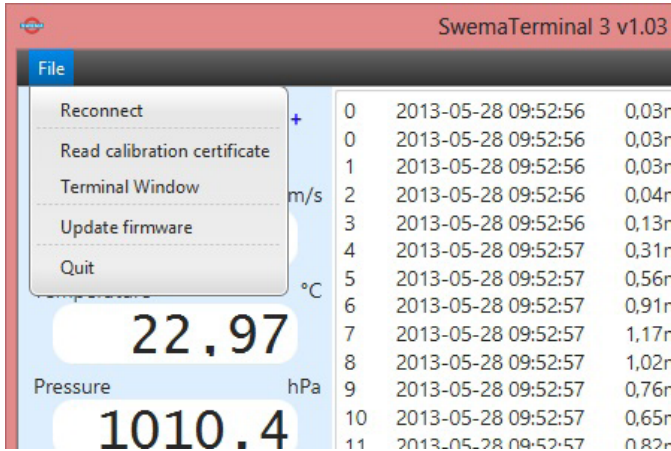
**Zero below:**

All the measured values of air velocity below the set value here will be shown as 0 m/s.

**Log:**

Press the "Log" button to start an online logging of measured values (will be saved as a txt-file). If the box to the left of "Unit" is checked the logged values will be shown/stored with chosen unit (m/s, fpm etc.) With "Freq:" it's possible to set how often a new value should be stored.

## 5. Terminal Window



It's possible to open a Terminal window through SwemaTerminal 3 to access some extra settings such as RS 485 communication setup. In the terminal it's also possible to adjust and calibrate Swema 03. Click on "File" in SwemaTerminal 3 and a drop down menu opens, click on "Terminal Window" and a new window is opened. Press "Enter" on the keyboard and the main terminal menu for Swema 03 will be opened. To change a setting or enter a sub menu such as the "Calibration and Adjustment Menu" or "Advanced settings" just use the keyboard and press on the corresponding letter.

### Swema 03 main terminal menu:

Swema 03 - Software version: 1.00

- [ ] Space - Print measurement values
- [,] Comma - Print measurement values with units
  
- [T] Averaging Time (0.01 - 1200 s, 0.1s for ISO 7726): 0.1 s
- [B] Barometer pressure (manual): 1013.0 hPa
- [D] Density compensation: Actual velocity
- [O] Decimal delimiter: Comma
- [U] Unit System: EU/ASIA
- [Z] Display zero below: 0 m/s
  
- [P] Print Calibration Certificate
- [C] Calibration and Adjustment Menu
- [A] Advanced settings

## 6. Calibration & Adjustment

If you want to calibrate and adjust Swema 03 press "C" on the keyboard when in the main terminal menu. In the Calibration and Adjustment menu it's possible to adjust the velocity and set a temperature offset (with Swema 03+ it's also possible to put in an offset for the barometric pressure). It's also possible in this menu to save new calibration data. If an offset is put in a "?" will appear on several rows to show that something has been changed and new calibration data is needed to be put in. Before you exit this menu you will be asked if you want to save your changes or not. **NOTE: If you save changes done in the calibration and adjustment menu it's NOT possible to restore Swema:s original calibration data.**

If you want to see how the changes looks like you can print a calibration certificate by pressing "P" in the main terminal menu.

## 7. Advanced settings

Press "A" in the main menu and following menu will be opened:

ADVANCED SETTINGS for Swema 03+

[ ] Space - Print measurement values

[,] Comma - Print measurement values with units

[R] Time since Power on

[\*] Activate for Firmware upgrade

[B] RS485 baud rate: off

[Esc] Exit

Press "R" to get information for how long Swema 05 has been powered on.

Press "\*" to activate the probe for firmware upgrade. It's however recommended to instead do the firmware upgrade through Swema-Terminal 3 main window (see chapter firmware upgrade).

Press "B" to activate RS 485 communication. When RS 485 communication is activated following settings will appear:

[B] RS485 Baud rate: 9600 bps

[P] RS485 Protocol: 0=none, 1=MODBUS: 0

[D] RS485 Address: 50

[E] RS485 Errors via USB: 0=off, 1=on: 0

[C] RS485 Check: 0=normal, 1=no CRC, 2=1s, 3=1s no CRC: 0

**[B]:** Set baud rate by pressing "B". Choose baud rate between 4800 - 460800bps.

**[P]:** Press "P" to choose RS 485 protocol. Set to "1" if Modbus protocol should be used.

**[D]:** Press "D" to set the RS 485 address for the probe, set an address from 1 to 247.

**[E] & [C]:** This is used for error checking and should only be used by experienced users of RS 485. It's recommended to have both of these set to "0" for normal usage.

## 8. RS 485-Modbus protocol

**There are 3 supported commands for reading:**

<33> will return 2 bytes representing the temperature

<34> will return 4 bytes representing the temperature and velocity

<35> will return 6 bytes representing the temperature, velocity and barometer

**Modbus data string:**

byte 1 = Address

byte 2 = Command

byte 3 = Length of returned data

byte 4 = Low CRC for byte 1 - 3

byte 5 = High CRC for byte 1 - 3

byte 6 = Low CRC for returned data byte 1 - 5

byte 7 = High CRC for returned data byte 1 - 5

**Command string in hex to read the temperature:**

<0A> <33> <00> <95> <3F> <00> <00>

**Example of response data in hex from probe. (2bytes):**

<0A> <33> <02> <09> <6E> <09> <3C>

<09> <6E> =  $2414/100 = 24.14$  dgC

**Command string in hex to read the temperature, velocity and barometer:**

<0A> <35> <00> <C7> <5F> <00> <00>

**Example of response data in hex from probe. (6 bytes)**

<0B> <35> <06> <09> <20> <00> <45> <27> <69> <A9>  
<EF>

<09> <20> =  $2336 / 100 = 23.36$  dgC

<00> <45> =  $69 / 1000 = 0.069$  m/s

<27> <69> =  $10089/10 = 1089$  hPa

## 9. Firmware update

On [www.swema.com](http://www.swema.com) new firmware version will be possible to download. To update the firmware first download the new firmware to your PC. Start SwemaTerminal 3 with the probe connected to a USB port with the USB cable (Part no: 767300). In SwemaTerminal 3 click on "File" and then "Update firmware". A new window is opened, just follow the instructions given to you in that window.

## 10. Accessories

<b>Part no</b>	<b>Product</b>
767300	USB cable, Swema 03/05 - PC
767610	RS 485 USB cable, RS 485 - PC
767630	RS 485 cable, Swema 03/05 - RS 485
767660	RS 485 3-way splitter
767670	RS 485 2m cable
767680	RS 485 5m cable
767690	RS 485 terminator
763710	SwemaMultipoint, software



Z.I. Le Trési 6 D - 1028 Préverenges  
Tél 021 637 12 37 - Fax 021 637 12 38  
[www.thermolab.ch](http://www.thermolab.ch)  
[info@thermolab.ch](mailto:info@thermolab.ch)