



IRI4015

Thermal Imager for Buildings

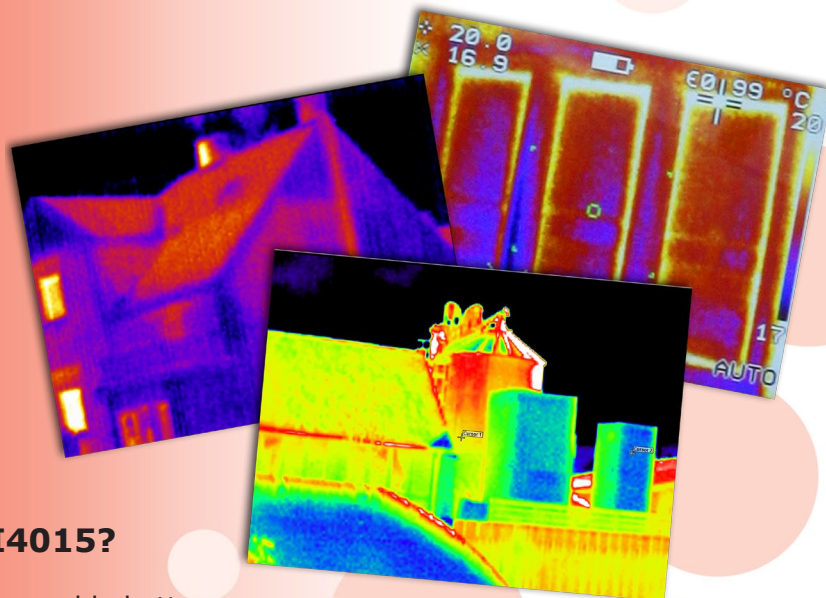
For the identification and diagnosis of issues that can cause energy loss, damage, unscheduled machine down time and ultimately increased costs in buildings

Who should use a Building Thermal Imager

- Building inspectors
- Facility managers
- Building surveyors
- Energy loss auditors
- Commercial refrigeration engineers
- Building and services maintenance teams

Why should you use it?

- Understand where your building is losing energy through ill fitting windows, doors walls and roofing
- Quickly assess where insulation is missing or non-existent
- Detect potential hidden dangers such as areas of damp collection in roofs and walls or vermin infestation in older buildings
- Highlight areas of thermal bridges
- Produce energy audits and building diagnostics
- To become an integral part of the electrical and mechanical predictive and preventative maintenance regime



Why use the Irisys IRI4015?

- Compact and easy to use
- Portable with long life rechargeable battery
- Highest thermal sensitivity (NETD $\leq 50\text{mK}$) in its price range
- Best screen resolution (160x120 pixels) in its class
- Can store over 1,000 images on supplied SD card
- Automatic temperature lock (to both hottest and coldest point) visible on the screen
- Instant on-screen temperature differential display
- Full analysis and report writing software included
- Very robust - Tested for vibration, shock and drop
- Minimal cost of ownership





The Irisys IRI4015 Building Thermal Imager Pack Includes:

IR Camera, battery, AC adaptor, USB cable, car charger, CD with user manual and software (PC analysis and report writer), light shade, carrying case, wrist strap rubber protector, SD card and SD card reader

TECHNICAL SPECIFICATION

PERFORMANCE

Field of view (FOV): 20°x15°
Focus: Manual
Minimum Focus: 30cm.
Spectral Response: 8µm to 14µm
Thermal Sensitivity: NETD ≤ 50mK (0.05°C)
@ 23°C ambient and
30°C scene temp
Detector: 160 X 120 Pixels
uncooled microbolometer.

MEASUREMENT

Temperature range: -20°C to +125°C.
Radiometry: Two moveable temperature measurement cursors giving automatic temperature difference measurement and auto locking onto hottest and coldest points.
Emissivity Correction: User selectable 0.1 to 1.0 in steps of 0.01 with reflected ambient temperature compensation.
Accuracy: The greater of ±2°C or ±2% of reading in °C

DISPLAY

3½" colour LCD with LED backlight and 4 colour palettes.

IMAGE STORAGE

Over 1000 images on supplied SD card (MMC or SD card compatible).

LASER POINTER

A built in Class 2 laser to highlight the centre of the imaged area

FEATURES

- Real time image and temperature measurement display.
- Auto hot/cold seeker
- Crisp high resolution images
- Large 3½" display
- Simple operation
- Multiple temperature measurement
- Multiple image storage and retrieval at full digital resolution
- Image browser with full image adjustment
- Battery charge indicator
- Lightweight

Authorised Irisys Distributor:

 **THERMOLAB**
Ch. du Vallon 26 - 1030 Bussigny
Tél 021 637 12 37 - Fax 021 637 12 38
www.thermolab.ch
info@thermolab.ch

SETTINGS AND CONTROLS

- On/Off soft power control.
- User selectable span control
- User selectable level control
- Auto adjust span and level
- Display palettes: rainbow, ironbow, high contrast and greyscale.
- Laser trigger switch.
- Readout in °C, °F or K.
- Image capture, time and date.
- 2 x digital zoom.

INTERFACES

USB type B

IMAGER POWER SUPPLY

Battery: Lithium-ion field rechargeable, replaceable battery with up to 6 hours continuous operation.
AC operation: AC adaptor supplied

MECHANICAL

Housing: Impact Resistant Plastic
Dimensions: 230mm x 120mm x 110mm
Weight: 0.75Kg including battery.
Mounting: Can be handheld or mounted on a tripod.

ENVIRONMENT

Temp: operating range -15°C to +50°C; storage range: -20°C to +70°C
Humidity: 10% to 90% non-condensing
CE Mark (Europe)
Operating temp for stated accuracy: 23°C
Vibration: MIL-PRF-288—F
Class 2 section 4.5.5.3.1
Shock: MIL-PRF-288—F
Class 2 section 4.5.5.4.1
Drop test: MIL-PRF-288—F
Class 2 section 4.5.5.4.2
IP rating: IP42

InfraRed Integrated Systems Limited

Park Circle, Tithe Barn Way, Swan Valley, Northampton, NN4 9BG. UK

Tel: **+44 (0) 1604 594 200**
Fax: **+44 (0) 1604 594 210**
Email: **sales@irisys.co.uk**
Web site: **www.irisys.co.uk**

© 2010 InfraRed Integrated Systems Limited (Irisys). No part of this publication may be reproduced without prior permission in writing from Irisys. Whilst Irisys will endeavor to ensure that any data contained in this product information is correct, Irisys do not warrant its accuracy or accept liability for any reliance on it. Irisys reserve the right to change the specification of the products and descriptions in this data sheet without notice. Prior to ordering products please check with Irisys for current specification details.

This product may be protected by patents EP 0 853 237 B1 and US 6,239,433 B1 and other patents pending. All brands and product names are acknowledged and may be trademarks or registered trademarks of their respective holders.

September 2010
IPU 40318
Issue 1

